

**ZOOMLION**

# ZTC1600V853G

## TRUCK CRANE



**4.0**  
PRODUCTS











# CONTENTS

■ ZTC1600V853G

<b>1</b>	<b>SPECIFICATIONS</b>	<b>03</b>
<b>2</b>	<b>TECHNICAL DATA</b>	<b>05</b>
<b>3</b>	<b>DIMENSIONS</b>	<b>06</b>
<b>4</b>	<b>ON-ROAD DRIVING / JOBSITE DRIVING</b>	<b>08</b>
<b>5</b>	<b>OM COMBINATIONS</b>	<b>09</b>
<b>6</b>	<b>LIFTING HEIGHTS + LIFTING CAPACITIES</b>	<b>10</b>
	Main boom OM	11
	Main boom + 10.4 m jib OM	18
	Main boom + 17.5 m jib OM	20
	Main boom + 25.5 m jib OM	22
	Main boom + 33.5 m jib OM	24

Hook

						● Standard ○ Optional
Specification	Weight (kg)	Transport dimensions (mm)	Fall	Single hook	Double hook	Configuration
110t	1280	1835×805×650	14	-	Double	○
90t	1068	1665×650×755	14	-	Double	○
70t	920	1580×650×700	10	-	Double	○
60t	620	1355×528×480	8	-	Double	●
55t	750	1590×650×460	6	Single	-	○
25t	580	1410×650×390	3	Single	-	○
8t	200	∅ 270×956	1	Single	-	●

Wire rope







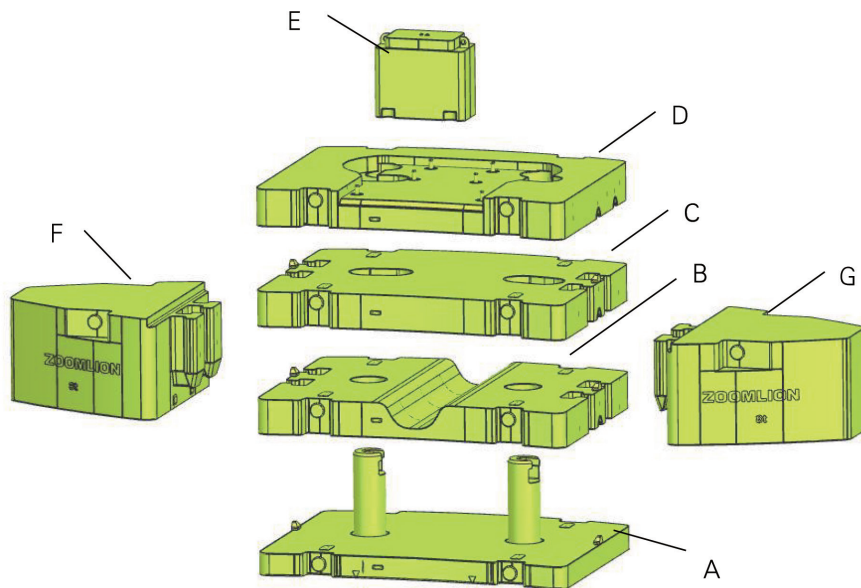
			
	Diameter(mm)	Length(m)	Max. pulling force of single rope (t)
 Main hoist rope	∅ 20	340	9.3
 Auxiliary hoist rope	∅ 20	245	8.5

Table of options

No.	Description	Remarks
1	Outrigger Pad	Overall dimensions: 1550mm*1550mm*120mm, 4 pieces
2	Extension	Including 2 pieces of 8m extensions
3	Hook	110t (ramshorn hook), 90t (ramshorn hook), 70t (ramshorn hook), 55t (single hook), 25t (single hook)
4	Auxiliary winch package	Select the auxiliary hoist mechanism



Transported individually

Unit: piece

	Name	Weight (t)	Transport dimensions (mm)	Quantity (piece)
<b>A</b>	Lower counterweight	8	2355×2990×980	1
<b>B</b>	Intermediate counterweight	9	2355×2990×410	1
<b>C</b>	Upper counterweight	10	2355×2990×412	1
<b>D</b>	Fixed counterweight I	13	2355×2990×350	1
<b>E</b>	Fixed counterweight II	1	420×870×755	1
<b>F</b>	Side counterweight	8	1885×1855×950	1
<b>G</b>	Side counterweight	8	1885×1855×950	1

Counterweight combinations

Combinations	A	B	C	D	E	F	G
<b>1t</b>	0	0	0	0	1	0	0
<b>14t</b>	0	0	0	1	1	0	0
<b>22t</b>	1	0	0	1	1	0	0
<b>31t</b>	1	1	0	1	1	0	0
<b>41t</b>	1	1	1	1	1	0	0
<b>57t</b>	1	1	1	1	1	1	1

# SPECIFICATIONS

*Crane Superstructure*

## Main boom

8-section telescopic boom made of high-tensile steel plate. Optimal oviform boom profile. It is with super load bearing capacity, light deadweight, large lateral stiffness and small end deflection.

## Jib

Jib variants: 10.4 m, 17.5 m, 25.5 m (One section of 8 m jib extension is available for options.), 33.5 m (Two sections of 8 m jib extensions are available for options.)  
The jib can be assembled below an angle of 0°, 15° or 30° to the telescopic boom according to your needs. The offset can be conveniently changed in a mechanical way.

## Telescoping system

The telescopic boom is telescoped by the single-stage telescoping cylinder with hydraulic interlocking device. Rapid-cycle telescoping system with "automatic mode", i.e. all-automatic telescoping to the desired boom length in sequence.

## Hoist gear

Main winch + auxiliary winch  
The main and auxiliary winches can be operated independently or simultaneously.  
High-performance rotation-resistant ropes and the press nipple can be used for rapid reeving change.

## Luffing gear

One hydraulic cylinder, providing the boom with smooth luffing movements from -0.5° to 80°.

## Slewing gear

Adopt the controllable free swing function.  
The cushion valve and the normally closed brake make the slewing operation stable and reliable.

## Slewing table

Box-type, torsion resistant design of high-tensile steel, providing super load bearing capacity.

## Operator's cab

4.0 series spacious panoramic cab with sliding door, outward pushing windshield, front foot pedal, safe guard rail around the roof of the cab  
No instrument console and electric elements are in the front of the cab. And thus, you can have a good riding experience

due to spacious room and comfortable feeling.  
Integrated bus key panel with night vision background light is clear and makes night work safe.  
Vertical 10.4 inch two-in-one LCD (touch screen) integrates all of functions and has good observation angle. And thus, you can have good operation experience.  
It is with USB plug. And thus, it is chargeable.  
The cab can be tilted for 0-20° to improve operator's field of vision and reduce the operation intensity.  
Cab heater and air conditioning.

## Counterweight

Full counterweight 57 t  
The counterweight can move backwards for 0.55 m.

## Hook

Standard configuration main hook is 60 t ramshorn one, which is with the rotatable hook and the hook latch.  
8 t auxiliary hook, which is also with the hook latch, can prevent the load from rotating.

## Hood

In frame-type structure of high functionality and convincing design  
It is made of the aluminium alloy.

## Control system

Superstructure operating mode consists of the electro-hydraulic proportional operation and the computer integrated control. Superstructure hydraulic system adopts open and closed combined system.  
It is of these functions such as the counterweight self-assembly and dismantling function, the operator's cab tilting angle adjustment function, which have good starting and braking stability as well as the higher system reliability.

## Monitoring system

Applying the bus technology, the superstructure and the chassis can monitor the outrigger pressures and the tilting angle of the chassis frame in real time. And thus, prevent the dangerous situations from happening.  
The complete vehicle is equipped with several encoders and sensors which can monitor each system state of the vehicle in real time. Combining with the upgraded safety strategy, prevent the dangerous situations from happening. And thus, realize the high efficient safety operation.

# SPECIFICATIONS

*Crane chassis*

## Engine

Model: Yuchai YCK11460-50  
Exhaust emission limit value: Europe V standard  
Displacement: 10.98 L  
Rated maximum power / RPM: 339 kW at 1900 r/min  
Max. output torque / RPM: 2200 N.m at 1000 -1500r/min  
Capacity of diesel oil tank: 450 L.

## Transmission

Fast 12-gear manual transmission  
12 forward and 1 reverse speeds, with the power take-off port  
Mechanical and manual transmission

## Axles

Homemade 12 t axle  
Drive steer type: 10×6×6  
Axles 1 and 2 are steer and driven ones.  
Axles 3 and 4 are through and drive ones. They are equipped with the longitudinal differential and the transversal differential as well as the differential lock.  
Axle 5 is steer and drive one. It is equipped with the transversal differential and the differential lock.  
All of axles adopt the drum brakes.

## Outrigger

H type two sectional outrigger, made of high-tensile steel ( $\delta s=960\text{MPa}$ )

## Tires

Tire size: 385/95R25  
Tire pressure: 1.0 MPa (homemade 385 tire), 0.9 MPa (imported 385 tire)

## Steering system

3 axles are mechanical and steer ones.  
Axles 1 and 2 adopt double-cylinder booster and axle 5 adopt single-cylinder booster.  
Semi-integrated power steering gear with a limit unloading function

## Suspension

Axles 1 and 2 adopt the longitudinally installed leaf spring suspension.  
Axles 3, 4 and 5 adopt the leaf spring + the balance sliding plate seat + the thrust rod balance suspension.

## Brake system

It consists of service brake, parking brake (emergency brake) and auxiliary brake.  
Service brake: dual-circuit air brake system, acting on all of wheels of all of axles.  
Parking brake (Emergency brake): spring-loaded brake, acting on axles 2-5.  
Auxiliary brake: engine cylinder compression brake, optional hydraulic retarder brake.  
A dual-circuit brake system adopts the drum brake. Each drum brake of axle 1 is equipped with two single diaphragm brake chambers. Each drum brake of axle 2 is equipped with two dual chamber diaphragm spring brake chambers. Each drum brake of axles 3, 4 and 5 is equipped with one dual chamber diaphragm spring brake chamber.  
The brake system is with ABS.







## Electrical system

CAN data bus technology  
The instrument console in the driver's cab adopts the combination instrument.  
Generator: 28 V, 80 A  
Two groups of batteries are series connected. And the rated voltage of each battery is 12 V.

## Driver's cab

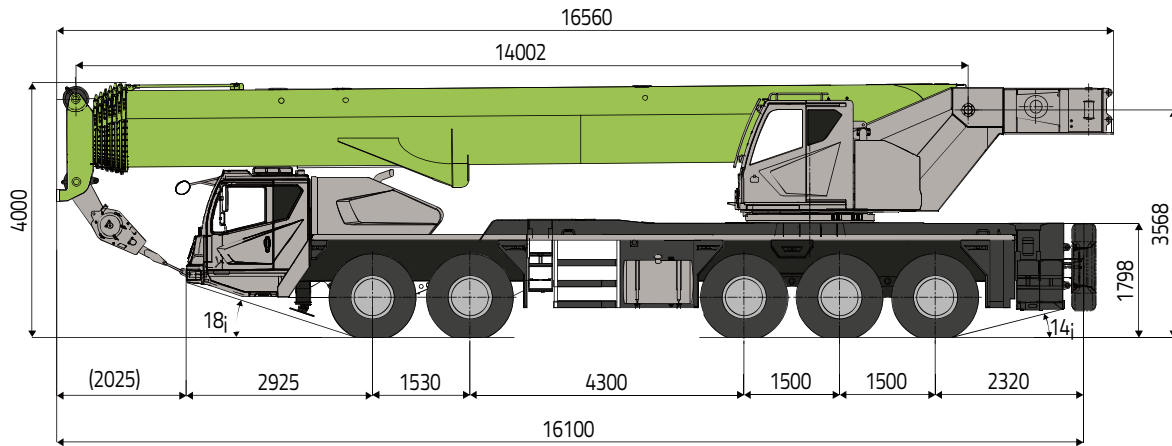
4.0A low-mounted, full-width and all-metal welded spacious driver's cab is with flexible lining.  
The control elements and displays are arranged according to ergonomic factors, thus for safe and convenient handling at permanent operation  
In addition, it can support you a comfortable riding experience and a broad field of vision.  
Besides, it is equipped with adjustable steering wheel, windshield washing device, electrically operated window, large combined multi-angle retroreflector.  
The equipment such as all kinds of electronic instruments, indicators, control switches, the cigarette lighter, USB interface, multimedia player, adjustable cab heater defrost device and single-cooled air conditioning are arranged on the control console.

# TECHNICAL DATA

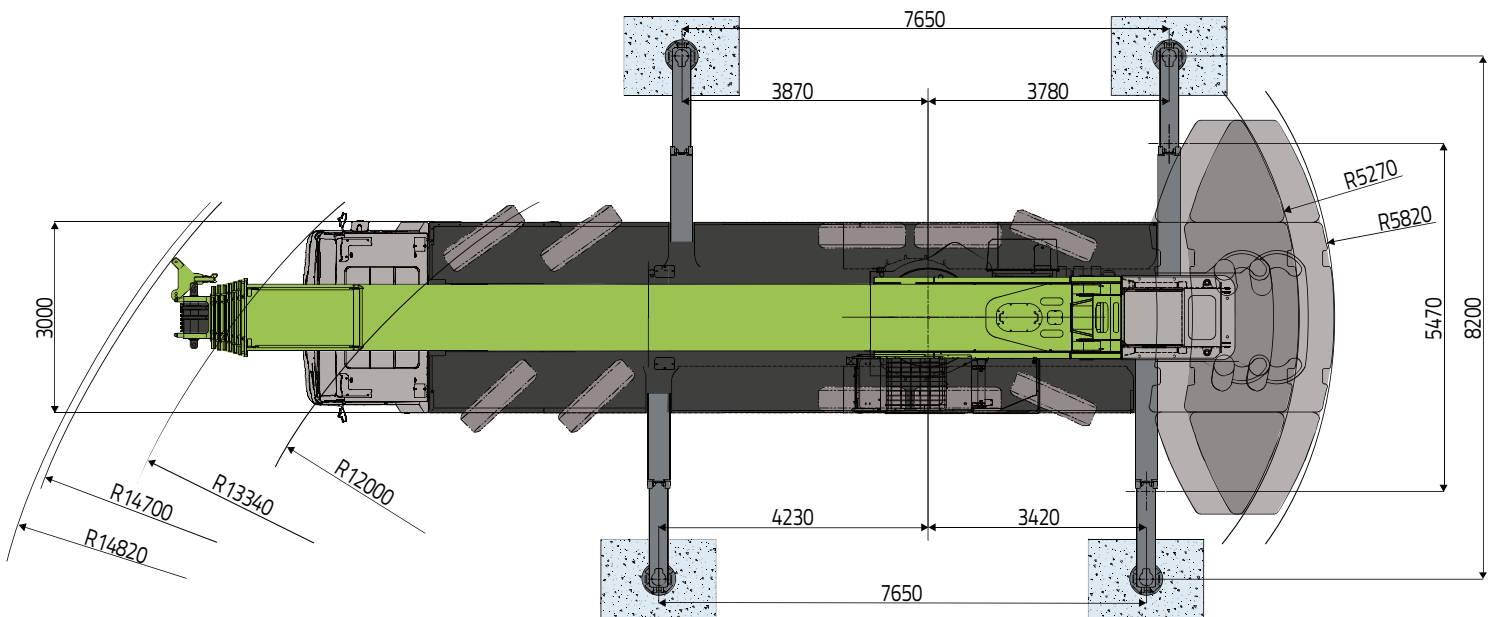
	Item	Unit	Value	Remarks
 <p><b>Working performance</b></p>	Max. rated lifting capacity	t	160	
	Max. load moment of basic boom	kN.m	4939	
	Max. load moment of main boom (fully extended)	kN.m	2017	
	Max. lifting height of basic boom	m	14.9	
	Max. lifting height of main boom	m	84.8	These parameters do not include deflection of boom and jib.
	Max. lifting height of jib	m	112.7	
 <p><b>Working speeds</b></p>	Max. hoist rope speed (Main winch)	m/min	135	
	Boom derricking up time	s	65	
	Boom extending time	s	850	
	Slewing speed	r/min	0~1.5	
 <p><b>Driving</b></p>	Max. operation altitude	m	2000	
	Max. driving speed	km/h	80	
	Max. gradeability	%	45	
	Min. turning diameter	m	≤12	
	Min. ground clearance	mm	330	
	Limits for exhaust pollutants and smoke		Europe V	
	Rear overhang angle	°	14	
 <p><b>Mass</b></p>	Deadweight in driving condition	kg	56000	
	Complete vehicle kerb mass	kg	55880	
	Single axle load	kg	11800/11800/10800 /10800/10800	
 <p><b>Engine</b></p>	Engine model		YCK11460-50	
	Max. power	kW/rpm	339/1900	
	Max. output torque	N·m/rpm	2200/1500	
 <p><b>Dimensions</b></p>	Overall dimensions (L×W×H)	mm	16560×3000×4000	
	Outrigger spread (W)	m	Completely extended: 8.2 m intermediate extended: 5.47 m	
	Outrigger spread (L)	m	7.65	
	Slewing radius of counterweight tail	mm	5270 (counterweight front position) 5820 (counterweight rear position)	
	Main boom length	mm	14~85	
	Boom angle	°	-0.5~80	
	Fix jib length	m	10.4, 17.5	Optional: 25.5m,33.5m
	Offset	°	0, 15, 30	

# DIMENSIONS

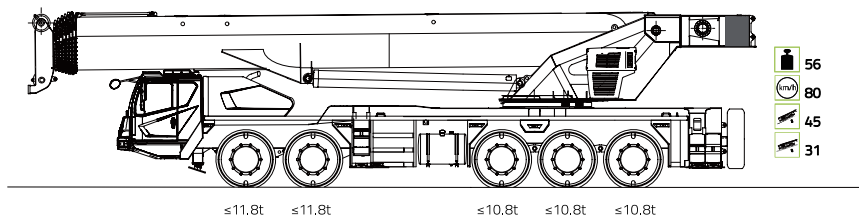
Unit: mm



Unit: mm

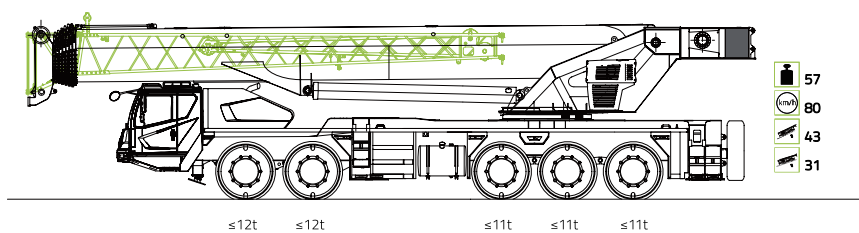


# ON-ROAD / JOBSITE DRIVING



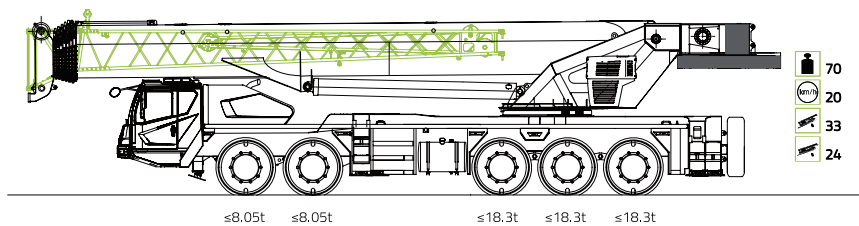
The jib is removed from the vehicle  
outrigger pads / spare tire / jib bracket /  
1t fixed counterweight

Total mass  
**56t**



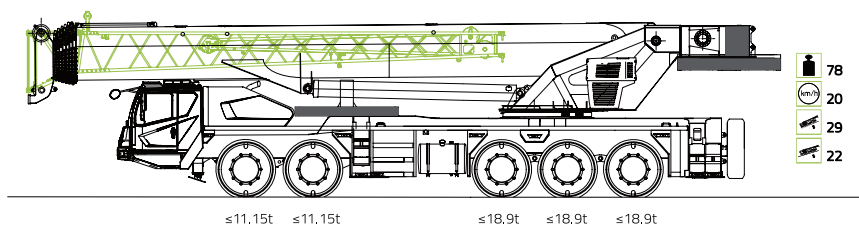
outrigger pads / spare tire / jib / jib bracket  
1t fixed counterweight

Total mass  
**57t**



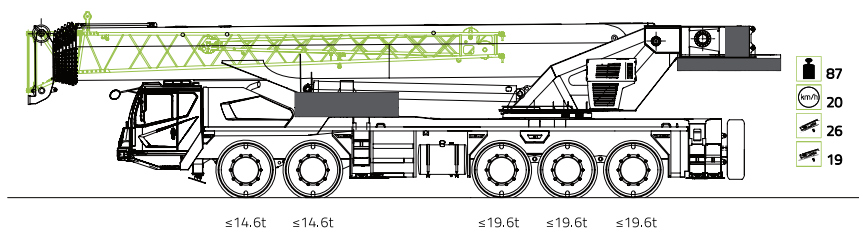
outrigger pads / spare tire / jib / jib bracket  
14t fixed counterweight  
(1t fixed counterweight  
+ 13t fixed counterweight)

Total mass  
**70t**



outrigger pads / spare tire / jib / jib bracket  
22t fixed counterweight  
(1t fixed counterweight +  
13t fixed counterweight +  
8t lower counterweight)

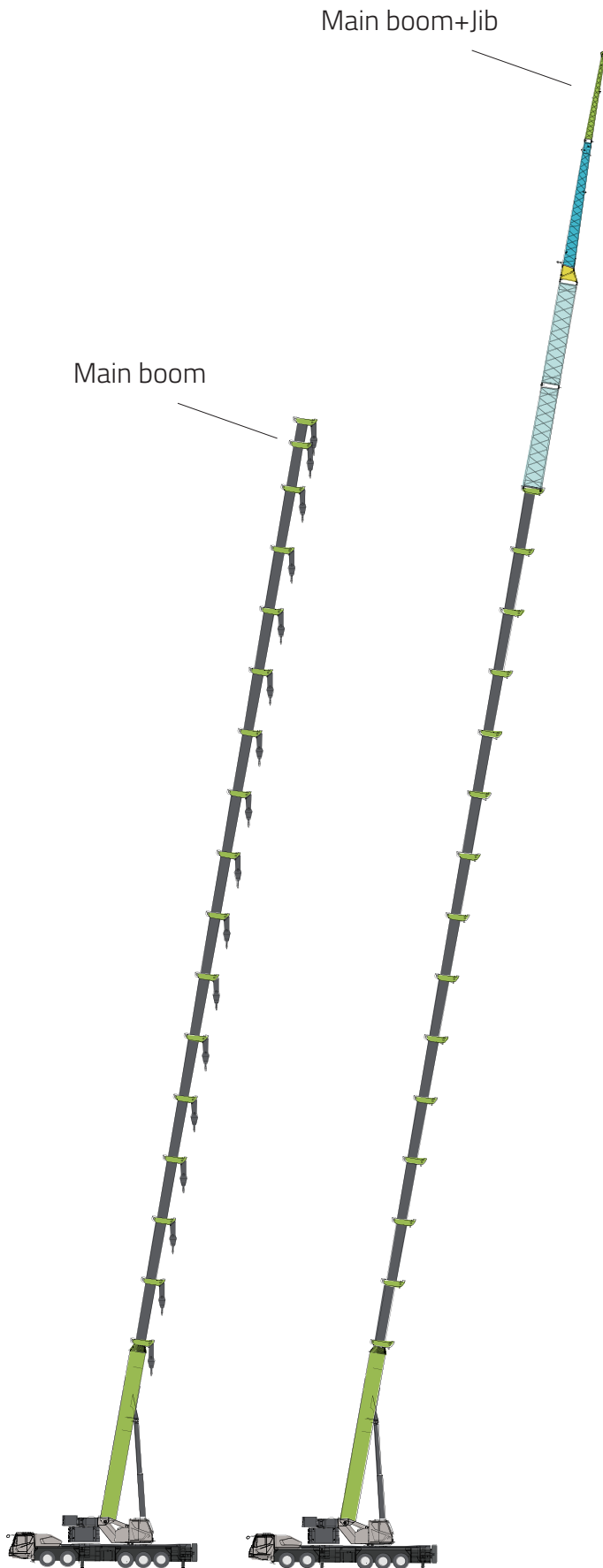
Total mass  
**78t**



outrigger pads / spare tire / jib / jib bracket  
31t fixed counterweight  
(1t fixed counterweight +  
13t fixed counterweight +  
8t lower counterweight +  
9 t intermediate counterweight)

Total mass  
**87t**

# BOOM/JIB COMBINATION



Working Condition	Boom/Jib Length
Boom	14-85m
Boom + 10.4m jib	Boom 65.7m + 10.4m jib
	Boom 70.4m + 10.4m jib
	Boom 75.1m + 10.4 m jib
	Boom 79.8m + 10.4 m jib
Boom + 17.5m jib	Boom 65.7m + 17.5m jib
	Boom 70.4m + 17.5m jib
	Boom 75.1m + 17.5m jib
	Boom 79.8m + 17.5m jib
Boom + 25.5m jib	Boom 65.7m + 25.5m jib
	Boom 70.4m + 25.5m jib
	Boom 75.1m + 25.5m jib
	Boom 79.8m + 25.5m jib
Boom + 33.5m jib	Boom 65.7m + 33.5m jib
	Boom 70.4m + 33.5m jib
	Boom 75.1m + 33.5m jib
	Boom 79.8m + 33.5m jib

# LIFTING HEIGHTS/CAPACITIES

This crane has lifting capacity tables of multiple and different OMs. The operator should select the corresponding lifting capacity tables to determine the rated load according to the actual operation situations.

- a) OMs marked with the asterisks (\*) are nominal ones. If the hook and the pulley on the boom frame need to be modified, contact the manufacturer in advance if necessary.
- b) OMs marked with colour ■ are optimal telescoping combinations.
- c) Do not lift a load that is above the capacity of the crane under any condition, especially for small counterweight OM.
- d) Do not perform the lifting operation when the wind speed exceeds the limit, especially for long boom length and large working radius OM.
- e) A temperature difference occurs between the side facing the sun and the side facing away from the sun in cranes with telescopic booms. The sunshine will cause that the material of the boom frame expands in hot condition and shrinks in cold condition, which affect the straightness of the boom frame to some extent, especially on the lateral sunshine.
- f) The graphic description is as follows.

## Graphical representation



Main Boom OM



Jib OM



Weight of counterweight



Working radius



Outriggers completely extended



Outriggers intermediately extended



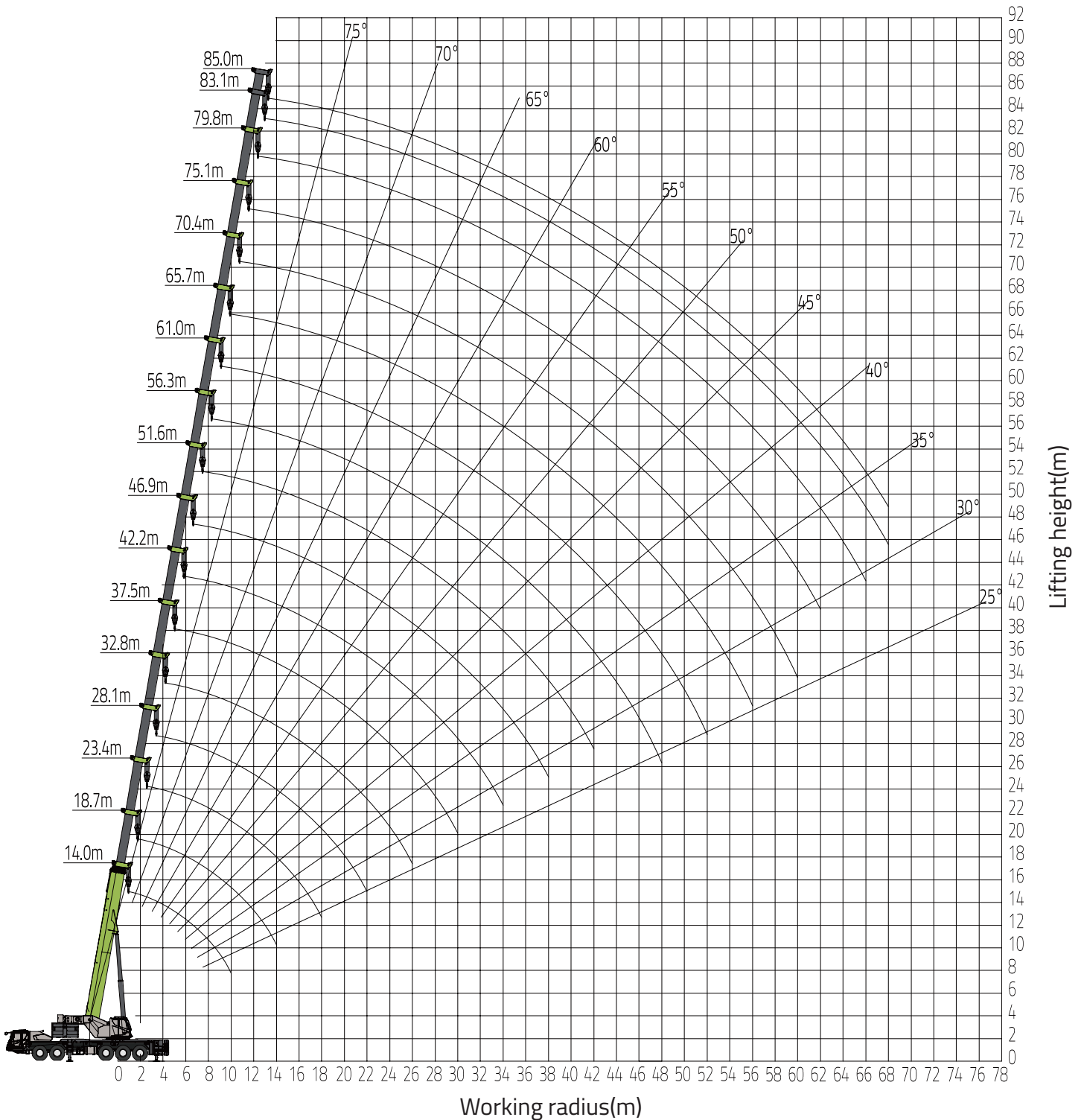
Over full range



Counterweight rear position

# LIFTING HEIGHT CHART

Main boom OM: 14m-85m




# RATED CAPACITY CHART

Main boom (table 1-1)

Unit: ton




	Boom length (m)														
	14	18.7	18.7	18.7	18.7	18.7	18.7	23.4	23.4	23.4	23.4	23.4	23.4	23.4	23.4
2.5	160*														
3.0	130*	35	70	80	90	100	112								
3.5	110	34	65	78	90	100	106	25	38	52	70	80	91	95	
4.0	104	35	62	73	90	95	97	24	37	51	68	80	91	92	
4.5	97	33	60	69	90	90	91	23	36	50	63	80	87	87	
5.0	91	31	60	61	85	85	86	22	35	46	60	75	84	84	
6.0	80	29.5	56	58	76	76	76	20	33	41	58	65	74	74	
7.0	72	27	50	53	65	65	65	18.5	31	38	55	60	64	64	
8.0	60	25	45	48	58	58	58	17	29	35	50	55	58	58	
9.0	53	23.5	41	44	53	52	52	16	27	32	46	50	53	52	
10.0	47	22	38	41	48	47	47	14.5	25.5	30	42	47	48	47	
12.0		19.5	33	35	43	42	41	13	23	26	36.5	40	42	40.5	
14.0		18	29	31	35	34	33.1	11	21	23	32	36	35	34	
16.0								10	19.2	20	29	30	29	28	
18.0								9	17.5	18.2	26	26	25	23.8	
20.0															
22.0															
Reeving	13	12						11							
Hook	110t														
Telescopic mode	I	1	1	1	1	1	1	1	1	1	1	1	1	1	2
	II	1	1	1	1	1	1	2	1	1	1	1	1	2	2
	III	1	1	1	1	1	2	1	1	1	1	1	2	2	1
	IV	1	1	1	1	2	1	1	1	1	1	2	2	1	1
	V	1	1	1	2	1	1	1	1	1	2	2	1	1	1
	VI	1	1	2	1	1	1	1	1	2	2	1	1	1	1
	VII	1	2	1	1	1	1	1	3	2	1	1	1	1	1

# RATED CAPACITY CHART

Main boom (table1-2)



Unit: ton


	Boom length (m)															
	28.1	28.1	28.1	28.1	28.1	28.1	28.1	28.1	32.8	32.8	32.8	32.8	32.8	32.8	32.8	
4.0	24	22	38	52	70	80	86									
4.5	24	21	37	51	65	76	84									
5.0	23	20	36	50	60	72	79	17	21	17.8	38	50	60	68		
6.0	22	18	35	48	58	64	72	15	20	17	37	50	56	67		
7.0	20	16.5	33	44	52	58	63	14.3	18.8	15.2	35	48	54	63		
8.0	19	15	30	40	48	54	58	13	17.2	13.9	34.4	45.4	49	58		
9.0	17.5	13.5	28	37	45	48.5	52	12	15.8	12.7	31.7	41.7	45	53		
10.0	16.5	12.5	26	34	41	45.5	47	11	14.6	11.6	29.3	38.5	42	48.5		
12.0	14.5	10.5	22	29	35	39	41	9.5	12.7	10	25.7	33.2	36	41.5		
14.0	13	9	19.5	26.5	31	34	34	8.3	11.2	8.7	22.7	29.2	32	35.6		
16.0	12	8	17	24	28	30.5	29.7	7.4	10	7.7	20.3	25.9	28	30.5		
18.0	10.5	7	15.5	21.5	25	27	25.7	6.6	9	6.8	18.4	23.2	25	26		
20.0	10	6.5	14	19.5	22.5	23.2	23	6	8.2	6.1	16.7	21.2	22.5	23.1		
22.0	9	6	13	18	20.5	19.8	19.5	5.4	7.4	5.5	15.4	19.4	20.2	20		
24.0								4.9	6.8	5	14.2	17.8	18.2	17.4		
26.0								4.6	6.3	4.5	13.2	16.6	16.5	15.1		
28.0																
30.0																
32.0																
Reeving	10							10								
Hook	90t							70t								
Telescopic mode	I	1	1	1	1	1	1	2	1	1	1	1	1	1	2	
	II	1	1	1	1	1	2	2	1	1	1	1	1	2	2	
	III	1	1	1	1	2	2	2	1	1	1	1	2	2	2	
	IV	1	1	1	2	2	2	1	1	1	1	2	2	2	2	
	V	1	1	2	2	2	1	1	1	2	3	2	2	2	1	
	VI	2	3	2	2	1	1	1	3	3	2	2	2	1	1	
	VII	3	2	2	1	1	1	1	3	2	2	2	1	1	1	

# RATED CAPACITY CHART

Main boom (table 1-3)

Unit: ton




	Boom length (m)														
	37.5	37.5	37.5	37.5	37.5	37.5	37.5	42.2	42.2	42.2	42.2	42.2	42.2	42.2	42.2
<b>6.0</b>															
<b>7.0</b>	14	12	15.5	20	35	46	60								
<b>8.0</b>	13	12	15	18	34	44	56	10	12	15	19	25	36	52	
<b>9.0</b>	12.2	11	13.5	16.5	33	41	52	9.8	11.8	14	18	23	35	50	
<b>10.0</b>	11.3	10.4	12.5	15.5	32	39	49	9	11.4	13.2	17	21	34	46	
<b>12.0</b>	10.6	8.9	11	13.6	28.4	34.4	41	8.3	10	12.3	15	19.2	31.9	40	
<b>14.0</b>	9.4	7.7	9.8	11.9	25.2	30.2	35.6	7.2	8.7	10.8	13.2	16.8	28.5	34.5	
<b>16.0</b>	8.4	6.8	8.7	10.4	22.7	26.7	31	6.3	7.7	9.5	11.7	14.9	25.6	30	
<b>18.0</b>	7.5	6	7.8	9.3	20.6	24	26.7	5.6	6.8	8.4	10.4	13.3	23	27	
<b>20.0</b>	6.8	5.3	7	8.3	18.9	21.8	23.9	5	6.1	7.5	9.4	11.9	20.9	23.7	
<b>22.0</b>	6.2	4.8	6.4	7.5	17.3	19.8	21	4.5	5.5	6.8	8.6	10.8	19.1	21	
<b>24.0</b>	5.7	4.3	5.8	6.8	16	18.2	18.2	4	5	6.1	7.8	9.8	17.5	18.5	
<b>26.0</b>	5.3	3.9	5.3	6.3	15	16.7	15.8	3.7	7.6	5.5	7.2	9	16.2	16.5	
<b>28.0</b>	4.9	3.6	4.9	5.7	14.1	15.4	13.8	3.3	4.2	5	6.6	8.2	15	14.6	
<b>30.0</b>	4.5	3.2	4.5	5.2	13.2	13.8	12.2	3	3.8	4.6	6.1	7.6	13.7	12.9	
<b>32.0</b>								2.7	3.5	4.2	5.6	7	12.4	11.5	
<b>34.0</b>								2.5	3.2	3.9	5.2	6.5	11.5	10.2	
<b>36.0</b>															
<b>38.0</b>															
<b>40.0</b>															
<b>Reeving</b>	9							8							
<b>Hook</b>	60t							55t							
<b>Telescoping mode</b>	I	1	1	1	1	1	1	2	1	1	1	1	1	1	2
	II	1	1	1	1	1	2	2	1	1	1	1	1	2	2
	III	1	1	1	1	2	2	2	1	1	1	1	2	2	2
	IV	1	1	1	2	2	2	1	1	1	1	2	2	2	2
	V	1	1	2	2	2	1	1	1	2	3	2	2	2	1
	VI	2	3	2	2	1	1	1	3	3	2	2	2	1	1
	VII	3	2	2	1	1	1	1	3	2	2	2	1	1	1

# RATED CAPACITY CHART

Main boom (table 1-4)



Unit: ton


	Boom length (m)														
	46.9	46.9	46.9	46.9	46.9	46.9	46.9	51.6	51.6	51.6	51.6	51.6	51.6	51.6	
<b>8.0</b>															
<b>9.0</b>	10	12	15	19	23	30	39								
<b>10.0</b>	9.6	11	14	18	22	28.5	38								
<b>12.0</b>	9	10.5	13.3	16.2	19.3	26	36	9	10.5	13	16	20	25	31	
<b>14.0</b>	8	9.5	11.9	14.3	17.1	23	32.5	8	10	12	15.5	18	23	28.2	
<b>16.0</b>	7.1	8.4	10.5	12.8	15.1	20.4	29.3	7.6	9.1	11.4	14.2	16.5	21	25.2	
<b>18.0</b>	6.3	7.5	9.4	11.5	13.5	18.2	26.8	6.9	8.2	10.3	12.7	14.8	19.5	22.6	
<b>20.0</b>	5.6	6.8	8.5	10.4	12.1	16.5	24.2	6.1	7.4	9.4	11.3	13.2	17.5	20.3	
<b>22.0</b>	5.1	6.2	7.6	9.5	10.9	15	21.6	5.6	6.8	8.5	10.2	12.1	16	18.4	
<b>24.0</b>	4.6	5.6	7	8.7	9.9	13.7	19	5.1	6.2	7.7	9.2	11	14.5	16.7	
<b>26.0</b>	4.2	5.1	6.3	8	9	12.5	17	4.7	5.7	7.1	8.4	10	13.2	15.2	
<b>28.0</b>	3.8	4.7	5.8	7.4	8.2	11.5	15	4.3	5.3	6.5	7.7	9.2	12.2	14	
<b>30.0</b>	3.5	4.3	5.3	6.9	7.5	10.7	13.3	4	4.9	6	7	8.5	11.2	12.7	
<b>32.0</b>	3.2	3.9	4.9	6.4	6.9	9.8	12	3.7	4.5	5.5	6.4	7.8	10.3	11.2	
<b>34.0</b>	2.9	3.6	4.5	5.9	6.4	9.2	10.7	3.4	4.2	5.1	5.9	7.2	9.6	10.2	
<b>36.0</b>	2.7	3.3	4.2	5.4	5.8	8.5	9.5	3.1	3.8	4.7	5.4	6.7	8.9	9	
<b>38.0</b>	2.5	3	3.9	5	5.4	8	8.6	2.9	3.5	4.4	5	6.2	8	8	
<b>40.0</b>								2.7	3.3	4.1	4.5	5.7	7.5	7.2	
<b>42.0</b>								2.5	3	3.8	4.2	5.3	6.8	6.6	
<b>44.0</b>															
<b>46.0</b>															
<b>48.0</b>															
<b>Reeving</b>	7							7							
<b>Hook</b>	55t														
<b>Telescoping mode</b>	I	1	1	1	1	1	1	2	1	1	1	1	1	2	3
	II	1	1	1	1	2	3	2	1	1	1	2	3	3	2
	III	1	1	2	3	3	2	2	1	2	3	3	3	2	2
	IV	2	3	3	3	2	2	2	3	3	3	3	2	2	2
	V	3	3	3	2	2	2	2	3	3	3	2	2	2	2
	VI	3	3	2	2	2	2	2	3	3	2	2	2	2	2
	VII	3	2	2	2	2	2	2	3	2	2	2	2	2	2

# RATED CAPACITY CHART

Main boom (table 1-5)

Unit: ton




	Boom length (m)														
	56.3	56.3	56.3	56.3	56.3	56.3					61	61	61	61	61
9.0															
10.0															
12.0	9.5	11	14	18	21	26									
14.0	9	10	13	16.8	19.8	24.5					9	11	13	17	20
16.0	8.3	9.5	12.5	15.5	18	22.5					8	10	12.5	16	19
18.0	7.5	5.9	11.4	13.9	16.3	20.3					7.5	9.5	12	15	17.6
20.0	6.8	8.1	10.4	12.4	14.8	18.5					7	8.9	11.3	14	16.1
22.0	6.2	7.4	9.5	11.2	13.5	17					6.6	8.1	10.5	12.8	15
24.0	5.7	6.8	8.7	10.2	12.3	15.3					6	7.5	9.7	11.7	13.6
26.0	5.2	6.3	8	9.4	11.3	14.1					5.5	7	9	10.7	12.6
28.0	4.8	5.8	7.4	8.6	10.4	12.8					5.1	6.5	8.2	9.9	11.6
30.0	4.4	5.4	6.8	7.9	9.6	11.6					4.8	6	7.5	9.1	11
32.0	4.1	5	6.2	7.2	8.9	10.7					4.5	5.7	7	8.4	10
34.0	3.8	4.7	5.7	6.7	8.2	9.8					4.1	5.3	6.3	7.8	9
36.0	3.5	4.4	5.2	6.1	7.7	8.9					3.9	5	5.9	7.2	8.3
38.0	3.3	4	4.8	5.7	7.1	8					3.6	4.7	5.4	6.7	7.6
40.0	3.1	3.8	4.4	5.2	6.7	7.1					3.4	4.4	5	6.2	7
42.0	2.8	3.5	4	4.8	6.2	6.2					3.2	4	4.6	5.8	6.4
44.0	2.7	3.3	3.7	4.5	5.5	5.6					3	3.7	4.2	5.4	5.8
46.0	2.5	3	3.4	4.1	5	5.1					2.8	3.4	3.9	5	5.2
48.0											2.6	3.1	3.6	4.7	4.6
50.0											2.5	2.8	3.3	4.2	4.1
52.0															
54.0															
56.0															
<b>Reeving</b>	6									7					
<b>Hook</b>	55t									25t					
<b>Telescoping mode</b>	I	1	1	1	1	2	3				1	1	1	2	3
	II	1	1	2	3	3	3				1	2	3	3	3
	III	2	3	3	3	3	2				3	3	3	3	3
	IV	3	3	3	3	2	2				3	3	3	3	2
	V	3	3	3	2	2	2				3	3	3	2	2
	VI	3	3	2	2	2	2				3	3	2	2	2
	VII	3	2	2	2	2	2				3	2	2	2	2

# RATED CAPACITY CHART

Main boom (table 1-6)

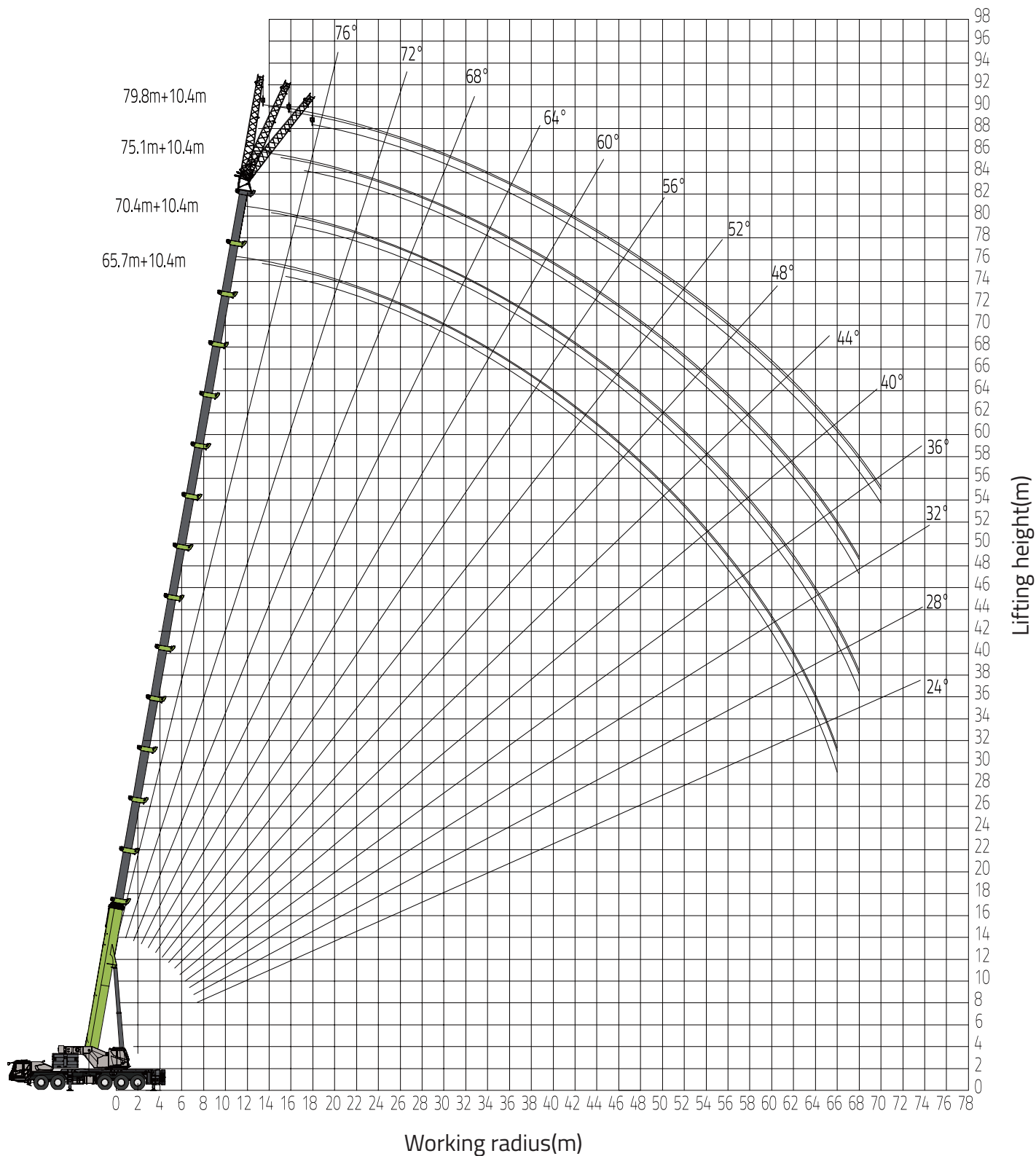


Unit: ton

	Boom length (m)														
	65.7	65.7	65.7	65.7		70.4	70.4	70.4		75.1	75.1	79.8	83.1	85	
12.0															
14.0															
16.0	9	10	13	17		9.6	11	13.5							
18.0	8.5	9.6	12	16.2		9	10.5	13.5		9	10				
20.0	7.8	9.3	11.5	14.9		8.5	10	12.8		8.3	10	8.3			
22.0	7.1	8.8	11	13.7		7.9	9.4	12		8	9.6	8.3	7	6.3	
24.0	6.5	8.2	10.5	12.6		7.3	8.8	11.2		7.7	9.3	8.1	6.9	6.3	
26.0	6.1	7.6	9.7	11.6		6.8	8.2	10.6		7.5	8.9	7.9	6.8	6.1	
28.0	5.7	7.3	9	10.7		6.3	7.7	10		7	8.4	7.4	6.6	6	
30.0	5.3	6.6	8.4	9.9		5.9	7.2	9.3		6.6	8	7	6.3	5.8	
32.0	5	6.2	7.8	9.2		5.5	6.8	8.6		6.2	7.5	6.6	6	5.6	
34.0	4.6	5.9	7.2	8.5		5.2	6.4	8		5.8	7.1	6.2	5.7	5.5	
36.0	4.3	5.5	6.7	7.9		4.9	6	7.3		5.5	6.7	5.9	5.5	5.3	
38.0	4	5.2	6.2	7.3		4.6	5.7	6.9		5.2	6.4	5.6	5.2	5.2	
40.0	3.8	4.9	5.8	6.7		4.4	5.4	6.3		4.9	6	5.3	5	5	
42.0	3.6	4.5	5.4	6.2		4.1	5.1	5.8		4.6	5.7	5	4.9	4.9	
44.0	3.4	4.1	5	5.6		3.9	4.7	5.4		4.4	5.3	4.7	4.6	4.6	
46.0	3.2	3.8	4.6	5.1		3.7	4.4	5		4.2	4.9	4.5	4.4	4.4	
48.0	3	3.5	4.3	4.7		3.5	4.1	4.6		4	4.5	4.3	4.2	4.2	
50.0	2.8	3.3	3.9	4.2		3.3	3.8	4.2		3.8	4.2	4.1	4	4	
52.0	2.6	3	3.6	3.8		3.1	3.5	3.9		3.6	3.9	3.9	3.7	3.7	
54.0	2.4	2.8	3.4	3.4		2.9	3.3	3.5		3.4	3.6	3.6	3.5	3.5	
56.0	2.2	2.6	3.1	3		2.7	3	3.2		3.1	3.3	3.4	3.1	3.1	
58.0						2.5	2.8	2.8		2.9	3	3.1	2.9	2.9	
60.0						2.2	2.5	2.4		2.7	2.7	2.8	2.7	2.7	
62.0										2.5	2.3	2.5	2.5	2.5	
64.0										2.3	2	2.2	2.2	2.2	
66.0												2	2	2	
68.0												1.7	1.7	1.7	
70.0													1.5	1.5	
72.0													1.3	1.3	
74.0													1	1	
<b>Reeving</b>		4					3				2				
<b>Hook</b>		25t													
<b>Telescopic mode</b>	I	1	1	2	3		1	2	3		2	3	3	3	4
	II	2	3	3	3		3	3	3		3	3	3	3	4
	III	3	3	3	3		3	3	3		3	3	3	4	4
	IV	3	3	3	3		3	3	3		3	3	3	4	4
	V	3	3	3	2		3	3	3		3	3	3	3	4
	VI	3	3	2	2		3	3	2		3	3	3	3	4
	VII	3	2	2	2		3	2	2		3	2	3	4	4

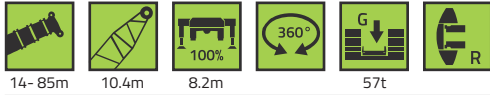
# LIFTING HEIGHT CHART

Main boom + 10.4 m jib OM




# RATED CAPACITY CHART

Main boom + 10.4 m jib OM (table 2)

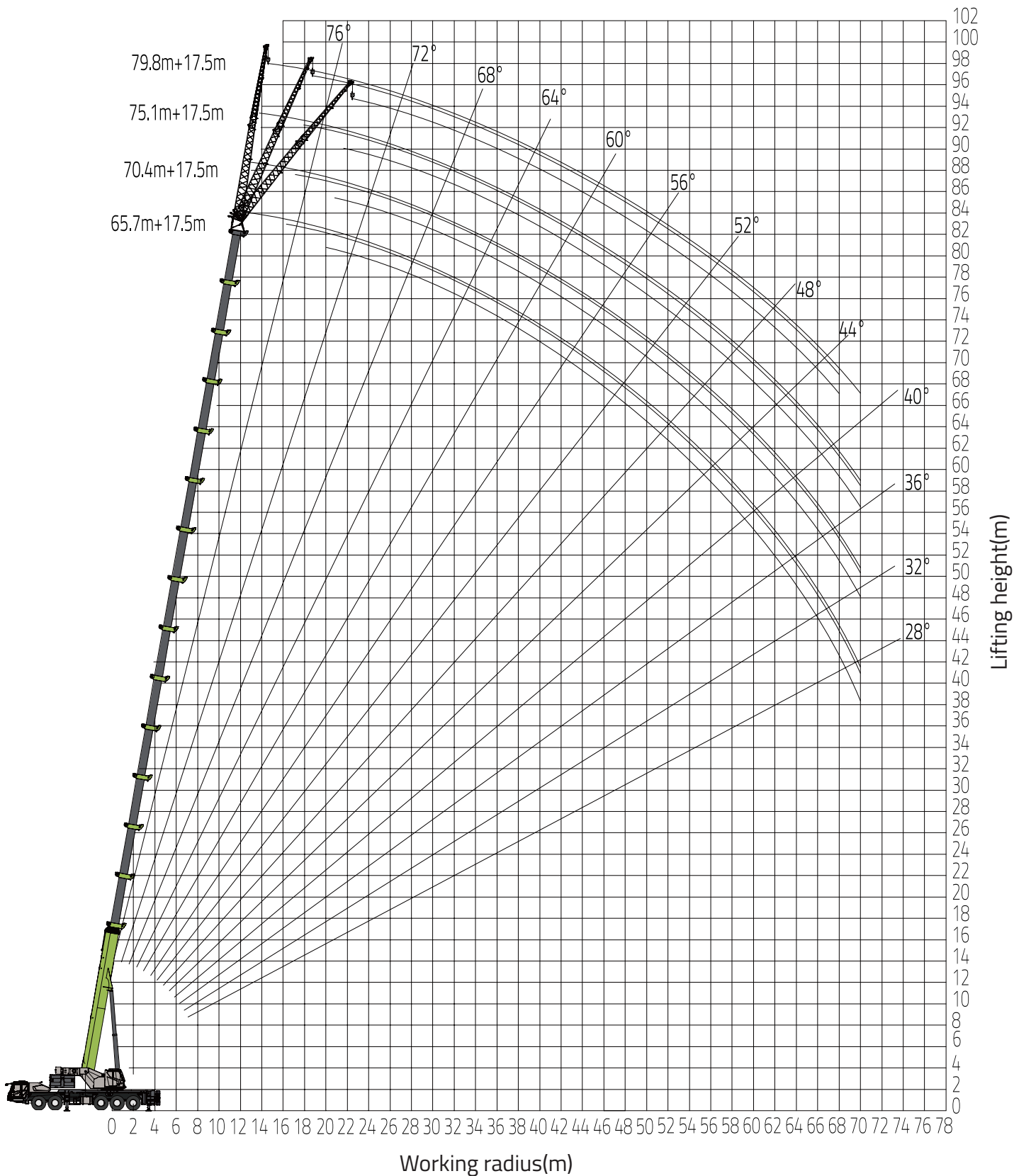


Unit: ton

	Boom +jib(10.4m)											
	65.7+10.4			70.4+10.4			75.1+10.4			79.8+10.4		
	0°	15°	30°	0°	15°	30°	0°	15°	30°	0°	15°	30°
20.0	6.2			6								
22.0	6.2	5.2		6	5.1		5					
24.0	6.2	5.1	4.8	6	5.1	4.6	5	4.6		4.1		
26.0	6.2	5	4.7	6	5.1	4.6	5	4.6	4.2	4.1	3.8	
28.0	6.1	4.9	4.6	5.9	5.1	4.5	4.9	4.6	4.2	4.1	3.8	3.5
30.0	6	4.8	4.5	5.8	5	4.4	4.8	4.5	4.1	4	3.8	3.5
32.0	5.9	4.7	4.4	5.7	5	4.3	4.6	4.3	4	3.9	3.7	3.5
34.0	5.8	4.6	4.3	5.6	4.9	4.2	4.3	4.1	3.9	3.8	3.6	3.4
36.0	5.7	4.5	4.2	5.5	4.8	4	4	3.8	3.6	3.6	3.5	3.3
38.0	5.6	4.4	4	5.4	4.7	3.8	3.8	3.6	3.4	3.4	3.3	3.1
40.0	5.5	4.3	3.8	5.2	4.6	3.6	3.6	3.4	3.2	3.2	3.1	3
42.0	5	4.2	3.7	4.7	4.5	3.5	3.4	3.2	3	3	2.9	2.8
44.0	4.6	4.1	3.6	4.4	4.3	3.4	3.2	3	2.8	2.8	2.7	2.6
46.0	4.1	3.9	3.5	3.9	3.8	3.3	3	2.9	2.7	2.6	2.5	2.5
48.0	3.7	3.6	3.4	3.5	3.5	3.2	2.8	2.7	2.5	2.4	2.4	2.3
50.0	3.2	3.1	3.2	3	3	3	2.6	2.5	2.3	2.3	2.2	2.2
52.0	3	2.9	3	2.8	2.8	2.8	2.5	2.4	2.2	2.2	2.1	2.1
54.0	2.7	2.7	2.8	2.6	2.6	2.6	2.3	2.2	2	2	2	1.9
56.0	2.5	2.5	2.6	2.4	2.4	2.4	2.2	2.1	1.9	1.9	1.9	1.8
58.0	2.3	2.3	2.3	2.3	2.3	2.2	2.1	2	1.8	1.8	1.8	1.7
60.0	2	2	2.1	2.1	2.1	2.1	1.8	1.8	1.7	1.7	1.6	1.6
62.0	1.8	1.8	1.9	1.9	1.9	1.9	1.5	1.5	1.5	1.5	1.5	1.5
64.0	1.4	1.4	1.5	1.5	1.5	1.5	1.2	1.2	1.2	1.3	1.3	1.3
66.0	1.2	1.2	1.3	1.3	1.3	1.3	1.1	1.1	1.1	1.2	1.2	1.2
68.0				1	1	1	1	1	1	1.1	1.1	1.1
70.0										1	1	1
72.0												
74.0												
Reeving		1			1			1			1	
Hook									8t			
Telescopic mode	I	3			3			3			3	
	II	3			3			3			3	
	III	3			3			3			3	
	IV	3			3			3			3	
	V	2			3			3			3	
	VI	2			2			3			3	
	VII	2			2			2			3	

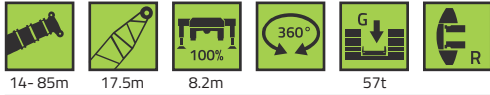
# LIFTING HEIGHT CHART

Main boom + 17.5 m jib OM




# RATED CAPACITY CHART

Main boom + 17.5m jib OM (table 3)

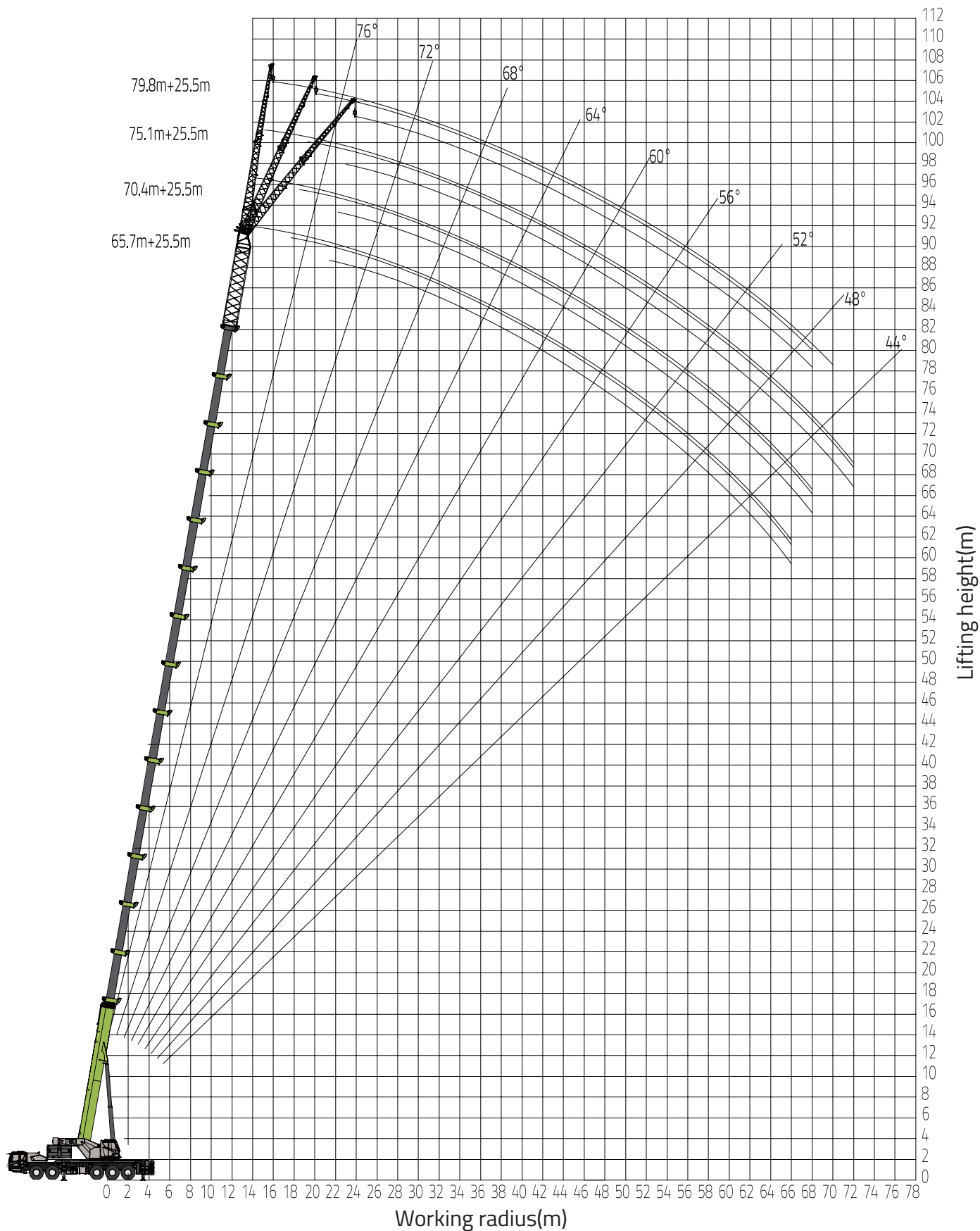


Unit: ton

	Boom +jib(17.5m)												
	65.7+17.5			70.4+17.5			75.1+17.5			79.8+17.5			
	0°	15°	30°	0°	15°	30°	0°	15°	30°	0°	15°	30°	
20.0													
22.0	3.5												
24.0	3.5			3.5									
26.0	3.5	2.8		3.5	2.7		3.2						
28.0	3.5	2.8	2.5	3.5	2.7	2.3	3.2	2.5		2.5			
30.0	3.5	2.8	2.5	3.5	2.7	2.3	3.2	2.5	2.2	2.5	2.2		
32.0	3.4	2.8	2.5	3.4	2.7	2.3	3.2	2.5	2.2	2.5	2.2	1.9	
34.0	3.4	2.8	2.5	3.4	2.7	2.3	3.2	2.5	2.2	2.5	2	1.9	
36.0	3.4	2.8	2.5	3.4	2.6	2.3	3.1	2.5	2.2	2.5	2.2	1.9	
38.0	3.4	2.8	2.4	3.3	2.6	2.3	3.1	2.5	2.2	2.5	2.2	1.8	
40.0	3.3	2.7	2.4	3.2	2.6	2.3	3	2.4	2.2	2.4	2.1	1.8	
42.0	3.2	2.7	2.4	3.1	2.5	2.2	2.9	2.4	2.2	2.4	2.1	1.8	
44.0	3	2.7	2.4	2.9	2.5	2.2	2.7	2.4	2.2	2.3	2.1	1.8	
46.0	2.8	2.6	2.3	2.7	2.5	2.2	2.5	2.4	2.1	2.2	2	1.7	
48.0	2.7	2.6	2.3	2.6	2.4	2.2	2.4	2.3	2.1	2.1	1.9	1.7	
50.0	2.6	2.5	2.3	2.5	2.4	2.2	2.3	2.2	2.1	1.9	1.8	1.6	
52.0	2.5	2.4	2.2	2.4	2.3	2.1	2.2	2.1	2	1.8	1.7	1.6	
54.0	2.3	2.2	2.1	2.2	2.1	2	2	1.9	1.9	1.7	1.6	1.5	
56.0	2.2	2.1	2	2.1	2	1.9	1.9	1.8	1.8	1.6	1.5	1.5	
58.0	2.1	2	1.9	2	1.9	1.8	1.8	1.7	1.7	1.5	1.4	1.4	
60.0	2	1.9	1.8	1.9	1.8	1.7	1.7	1.6	1.6	1.4	1.3	1.3	
62.0	1.8	1.8	1.7	1.7	1.7	1.6	1.5	1.5	1.5	1.3	1.2	1.2	
64.0	1.6	1.6	1.6	1.5	1.5	1.5	1.3	1.4	1.4	1.2	1.1	1.1	
66.0	1.5	1.5	1.5	1.4	1.4	1.4	1.3	1.3	1.3	1.1	1	1	
68.0	1.4	1.4	1.4	1.3	1.3	1.3	1.1	1.2	1.2	1	1	1	
70.0	1.1	1.1	1.2	1.1	1.1	1.2	1	1.1	1.1	1			
72.0													
74.0													
<b>Reeving</b>	1			1			1			1			
<b>Hook</b>	8t												
<b>Telescoping mode</b>	I	3			3			3			3		
	II	3			3			3			3		
	III	3			3			3			3		
	IV	3			3			3			3		
	V	2			3			3			3		
	VI	2			2			3			3		
	VII	2			2			2			3		

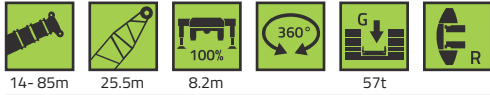
# LIFTING HEIGHT CHART

Main boom + 25.5 m jib OM




# RATED CAPACITY CHART

Main boom + 25.5m jib OM (table 4)

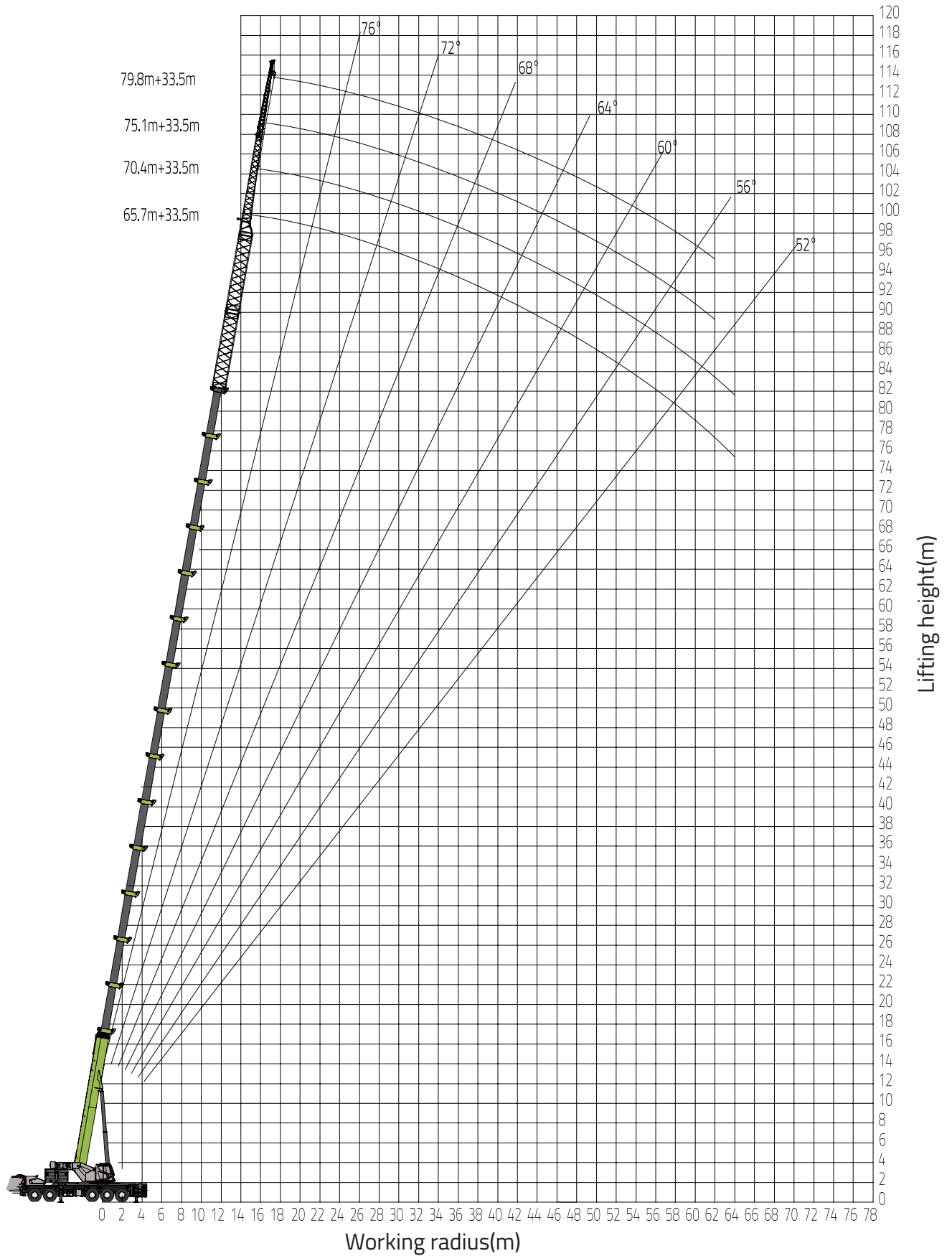


Unit: ton

	Boom +jib(25.5m)												
	65.7+25.5			70.4+25.5			75.1+25.5			79.8+25.5			
	0°	15°	30°	0°	15°	30°	0°	15°	30°	0°	15°	30°	
20.0													
22.0													
24.0	2.5												
26.0	2.5	2.2		2.4									
28.0	2.5	2.2	1.9	2.4	2.1		2.3						
30.0	2.5	2	1.9	2.4	2.1	1.8	2.3	2		1.9			
32.0	2.5	2.2	1.9	2.3	2.1	1.8	2.3	2	1.7	1.9			
34.0	2.4	2.2	1.9	2.3	2	1.8	2.3	2	1.7	1.9	1.7		
36.0	2.4	2.2	1.9	2.3	2	1.8	2.3	2	1.7	1.9	1.7	1.6	
38.0	2.4	2.2	1.9	2.3	2	1.8	2.3	2	1.7	1.9	1.7	1.6	
40.0	2.4	2.1	1.9	2.3	1.9	1.8	2.2	2	1.7	1.9	1.7	1.5	
42.0	2.3	2.1	1.8	2.3	1.9	1.8	2.2	2	1.7	1.9	1.7	1.5	
44.0	2.3	2.1	1.8	2.2	1.9	1.8	2.2	1.9	1.7	1.8	1.7	1.5	
46.0	2.3	2.1	1.8	2.2	1.9	1.8	2.2	1.9	1.6	1.8	1.7	1.5	
48.0	2.2	2.1	1.8	2.2	1.8	1.7	2.1	1.9	1.6	1.8	1.7	1.5	
50.0	2.1	2	1.8	2.1	1.8	1.7	2	1.8	1.6	1.7	1.6	1.4	
52.0	2	2	1.8	2	1.8	1.7	1.9	1.8	1.6	1.6	1.6	1.4	
54.0	1.9	1.9	1.8	1.9	1.7	1.7	1.8	1.7	1.6	1.5	1.5	1.4	
56.0	1.8	1.8	1.7	1.8	1.7	1.7	1.7	1.6	1.5	1.4	1.4	1.3	
58.0	1.7	1.7	1.6	1.6	1.6	1.6	1.6	1.5	1.4	1.3	1.3	1.2	
60.0	1.6	1.6	1.5	1.5	1.5	1.5	1.5	1.4	1.3	1.2	1.2	1.2	
62.0	1.4	1.4	1.3	1.4	1.4	1.4	1.4	1.3	1.2	1.1	1.1	1.1	
64.0	1.3	1.3	1.3	1.3	1.3	1.3	1.3	1.2	1.2	1.1	1.1	1	
66.0	1.1	1.2	1.2	1.2	1.2	1.2	1.2	1.2	1.1	1	1	1	
68.0				1.1	1.1	1.1	1.1	1.1	1.1	1	1	1	
70.0							1	1	1	1			
72.0							1	1	1				
74.0													
<b>Reeving</b>	1			1			1			1			
<b>Hook</b>	8t												
<b>Telescoping mode</b>	I	3			3			3			3		
	II	3			3			3			3		
	III	3			3			3			3		
	IV	3			3			3			3		
	V	2			3			3			3		
	VI	2			2			3			3		
	VII	2			2			2			3		

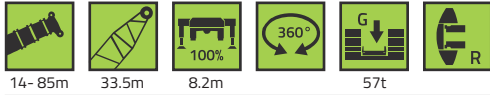
# LIFTING HEIGHT CHART

Main boom + 33.5 m jib OM




# RATED CAPACITY CHART

Main boom + 33.5m jib OM (table5)



Unit: ton

	Boom +jib(25.5m)											
	65.7+33.5			70.4+33.5			75.1+33.5			79.8+33.5		
	0°			0°			0°			0°		
20.0												
22.0												
24.0												
26.0												
28.0												
30.0	1.7			1.6			1.5					
32.0	1.7			1.6			1.5			1.2		
34.0	1.7			1.6			1.5			1.2		
36.0	1.7			1.6			1.5			1.2		
38.0	1.7			1.5			1.5			1.2		
40.0	1.6			1.5			1.4			1.2		
42.0	1.6			1.5			1.4			1.2		
44.0	1.6			1.5			1.4			1.1		
46.0	1.6			1.5			1.4			1.1		
48.0	1.5			1.4			1.3			1.1		
50.0	1.5			1.4			1.3			1.1		
52.0	1.5			1.4			1.3			1.1		
54.0	1.5			1.4			1.3			1.1		
56.0	1.4			1.3			1.2			1		
58.0	1.4			1.3			1.2			1		
60.0	1.3			1.2			1.1			1		
62.0	1.2			1.1			1			1		
64.0	1.1			1								
66.0												
68.0												
70.0												
72.0												
74.0												
<b>Reeving</b>	1			1			1			1		
<b>Hook</b>	8t											
<b>Telescoping mode</b>	I	3		3			3			3		
	II	3		3			3			3		
	III	3		3			3			3		
	IV	3		3			3			3		
	V	2		3			3			3		
	VI	2		2			3			3		
	VII	2		2			2			3		

**ZOOMLION**

**Zoomlion Heavy Industry Science & Technology Co.,Ltd.**

**Add: No.677, Lugu Road, Zoomlion Industrial Park, Changsha, Hunan, China, 410205**

Copyright©2024 Zoomlion. All rights reserved. Reproduction and copying of any part of contents is not allowed for any purposes without Zoomlion's approval.



Product specifications are subject to change without notice and obligation. The photographs and/or drawing in this document are for illustrative purposes only. Please consult your local ZOOMLION dealer for more information.

website:en.zoomlion.com